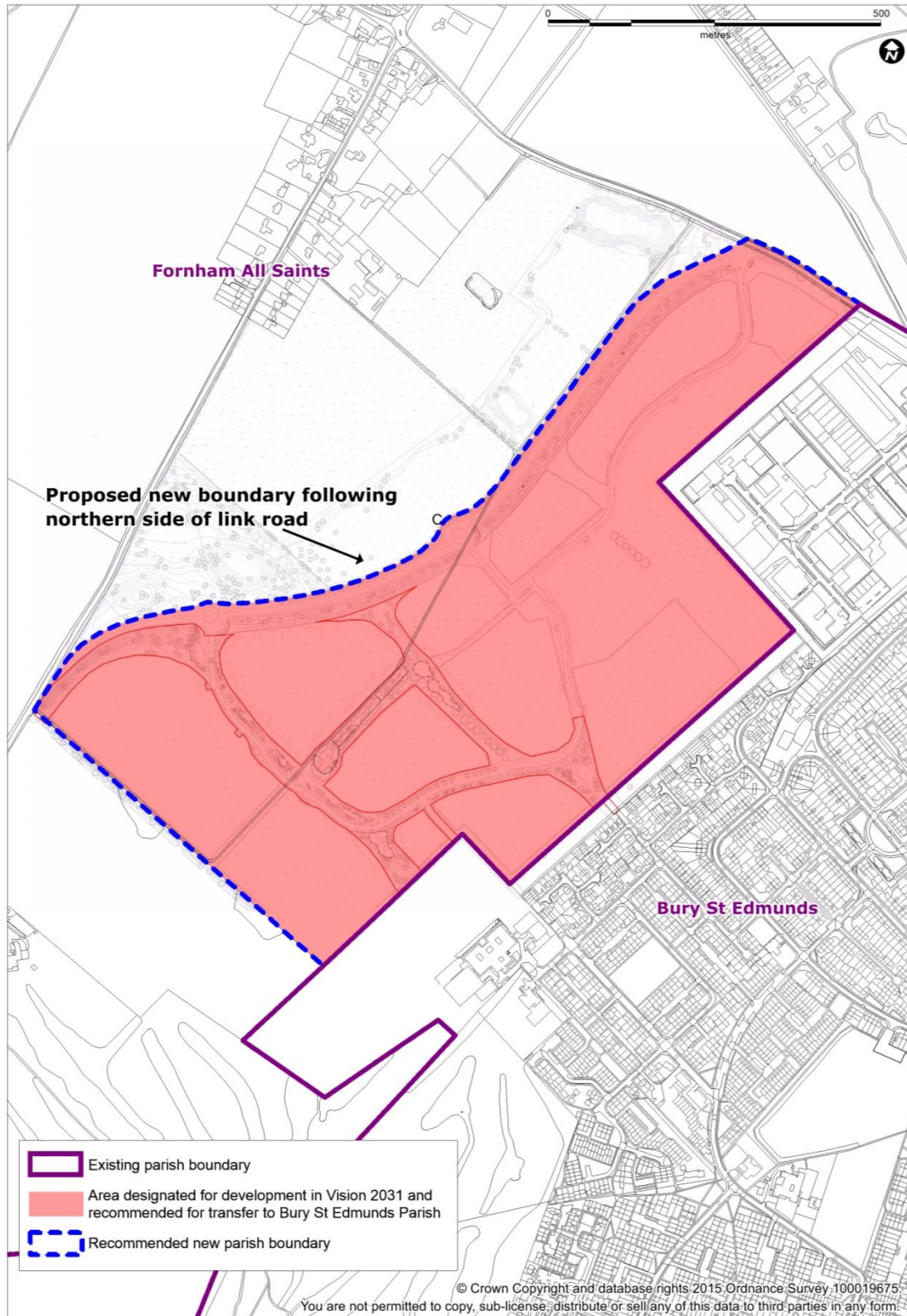
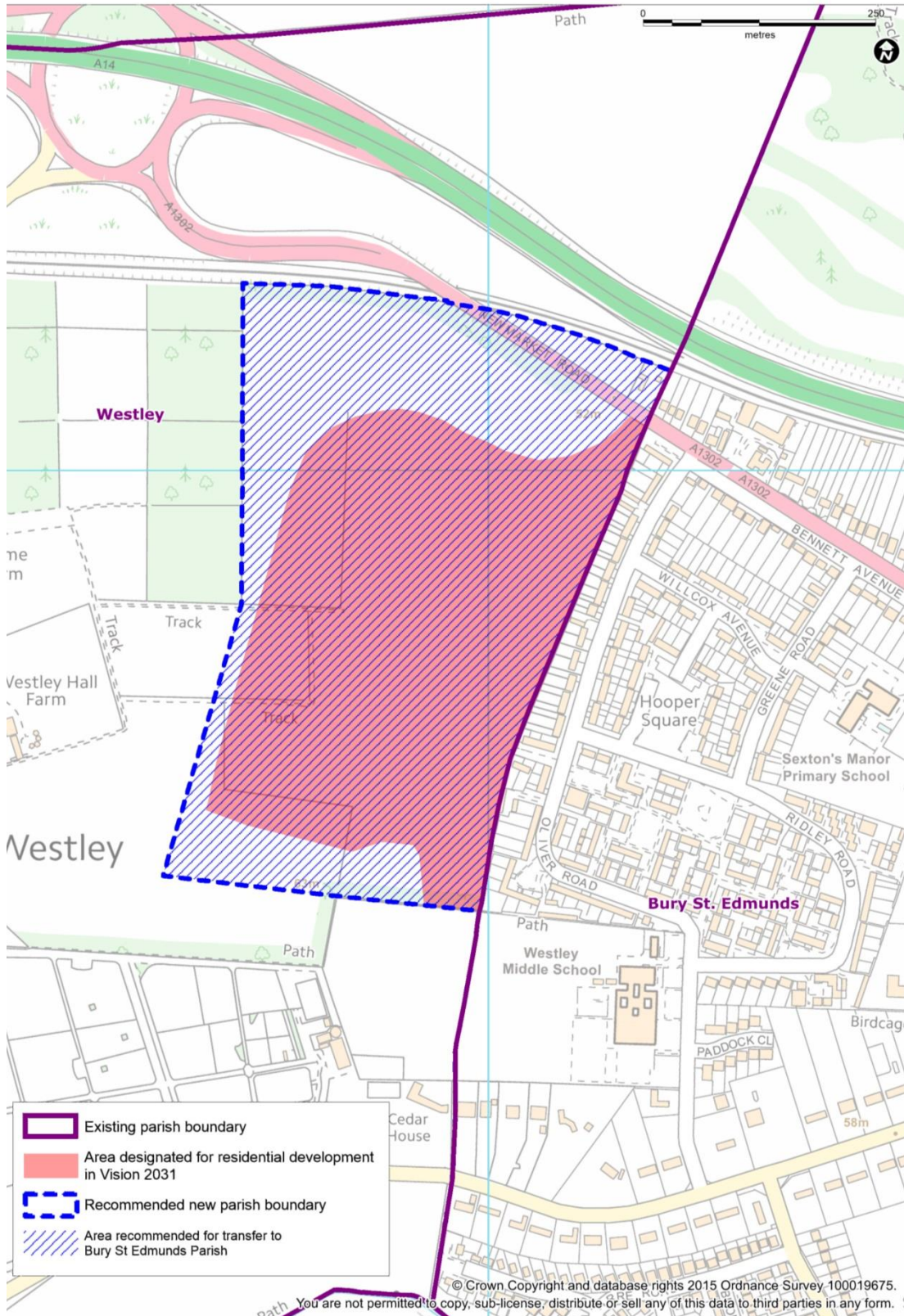


# Maps for final recommendations for the Community Governance Review

## Issue No. 1 – Vision 2031 Strategic Site “North-West Bury St Edmunds”

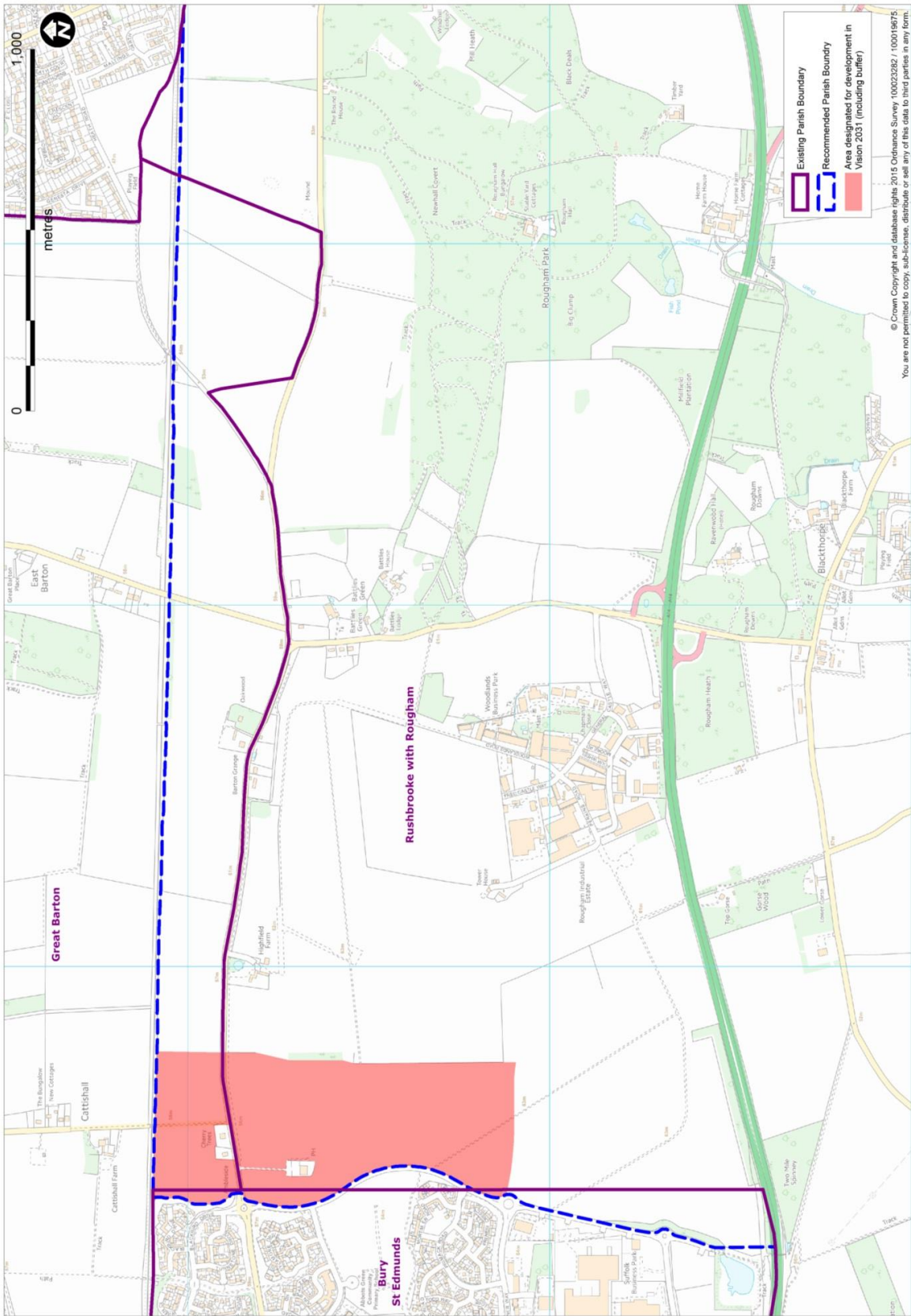


Issue No. 2 – Vision 2031 Strategic Site “West Bury St Edmunds”

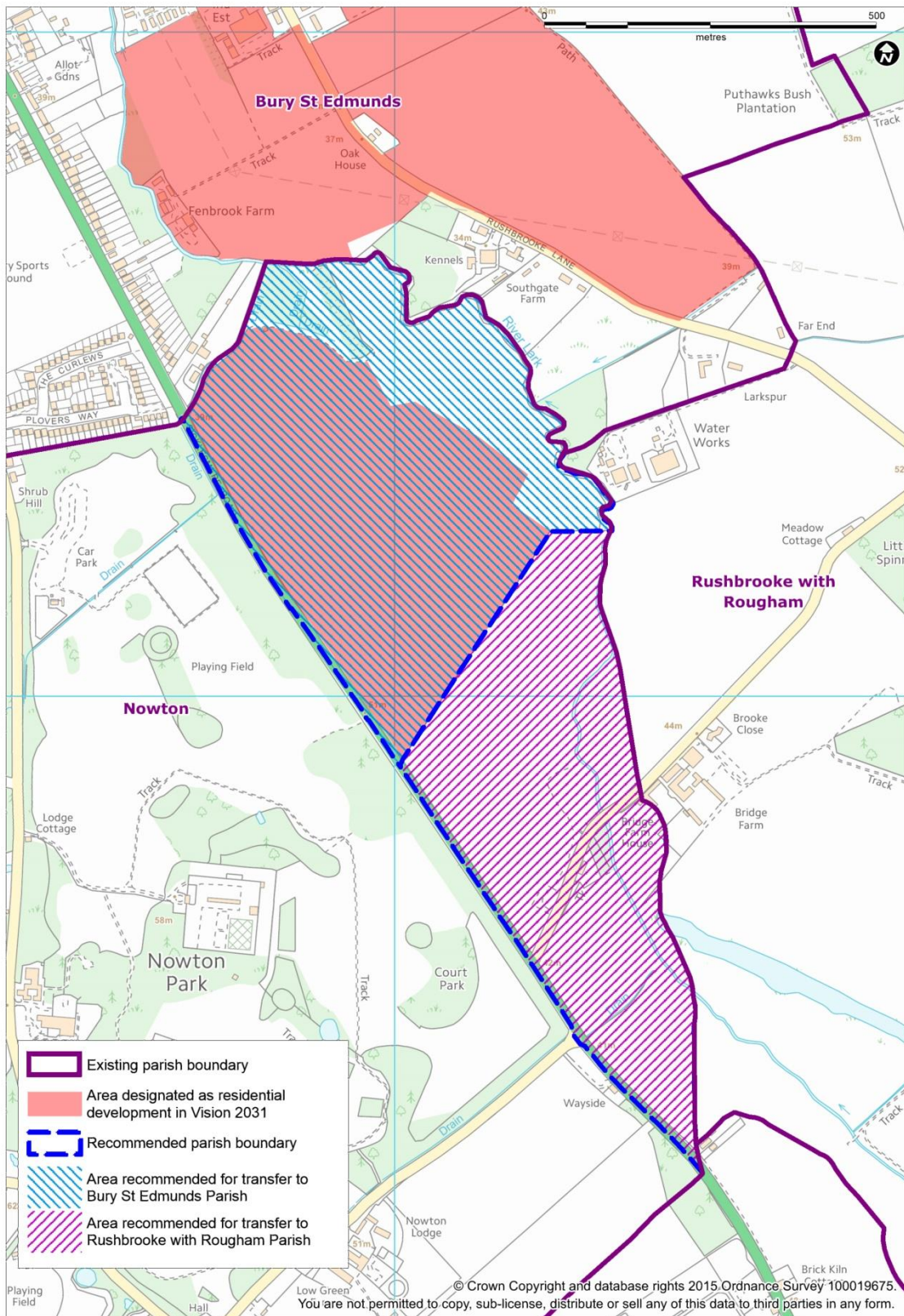




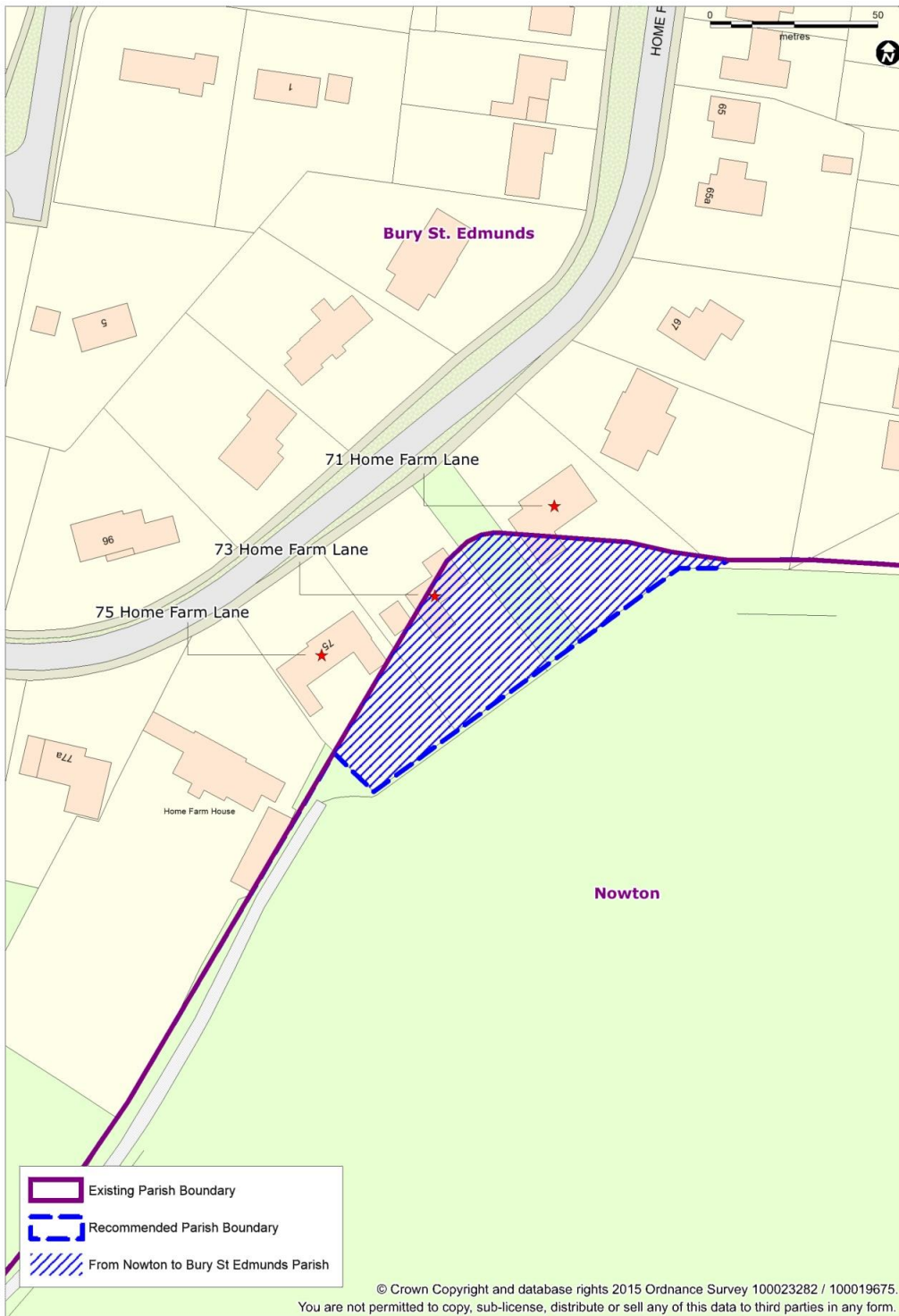
Issue No. 4 – Vision 2031 Strategic Site “Moreton Hall”



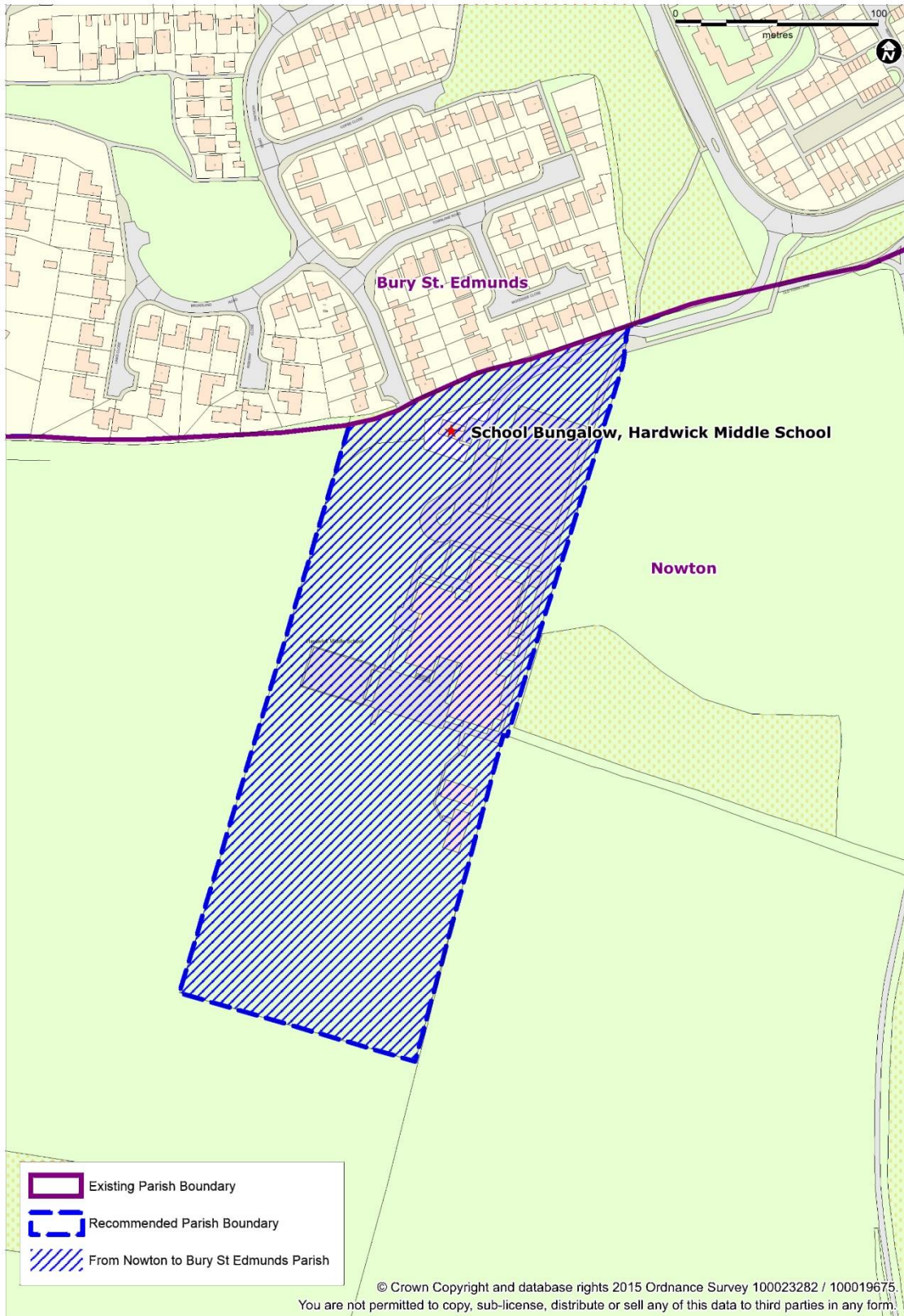
Issue No. 5 – Vision 2031 Strategic Site “South-East Bury St Edmunds”



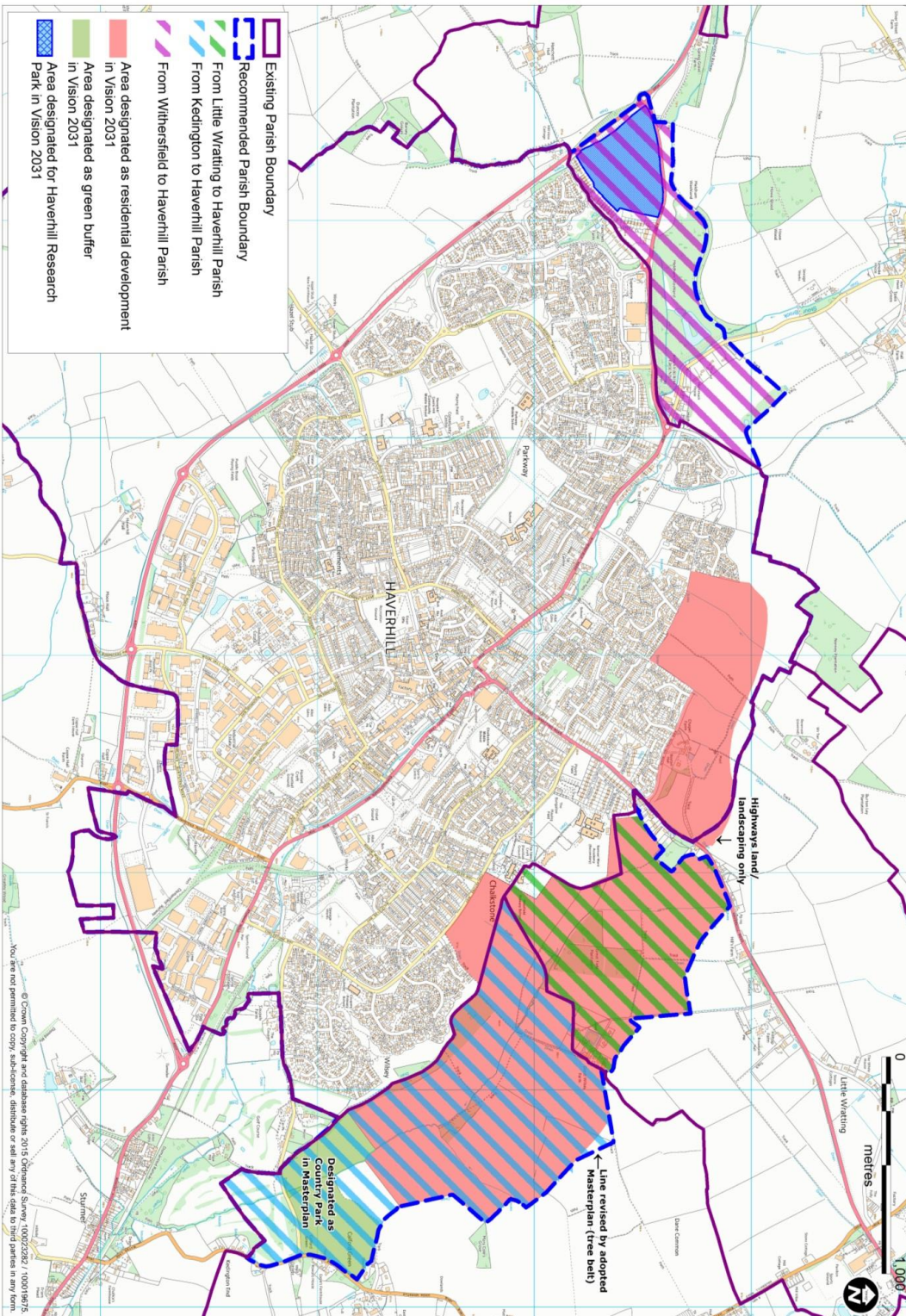
Issue No. 9 – 71, 73 and 75 Home Farm Lane



Issue No. 10 – School Bungalow, Hardwick Middle School, Mayfield

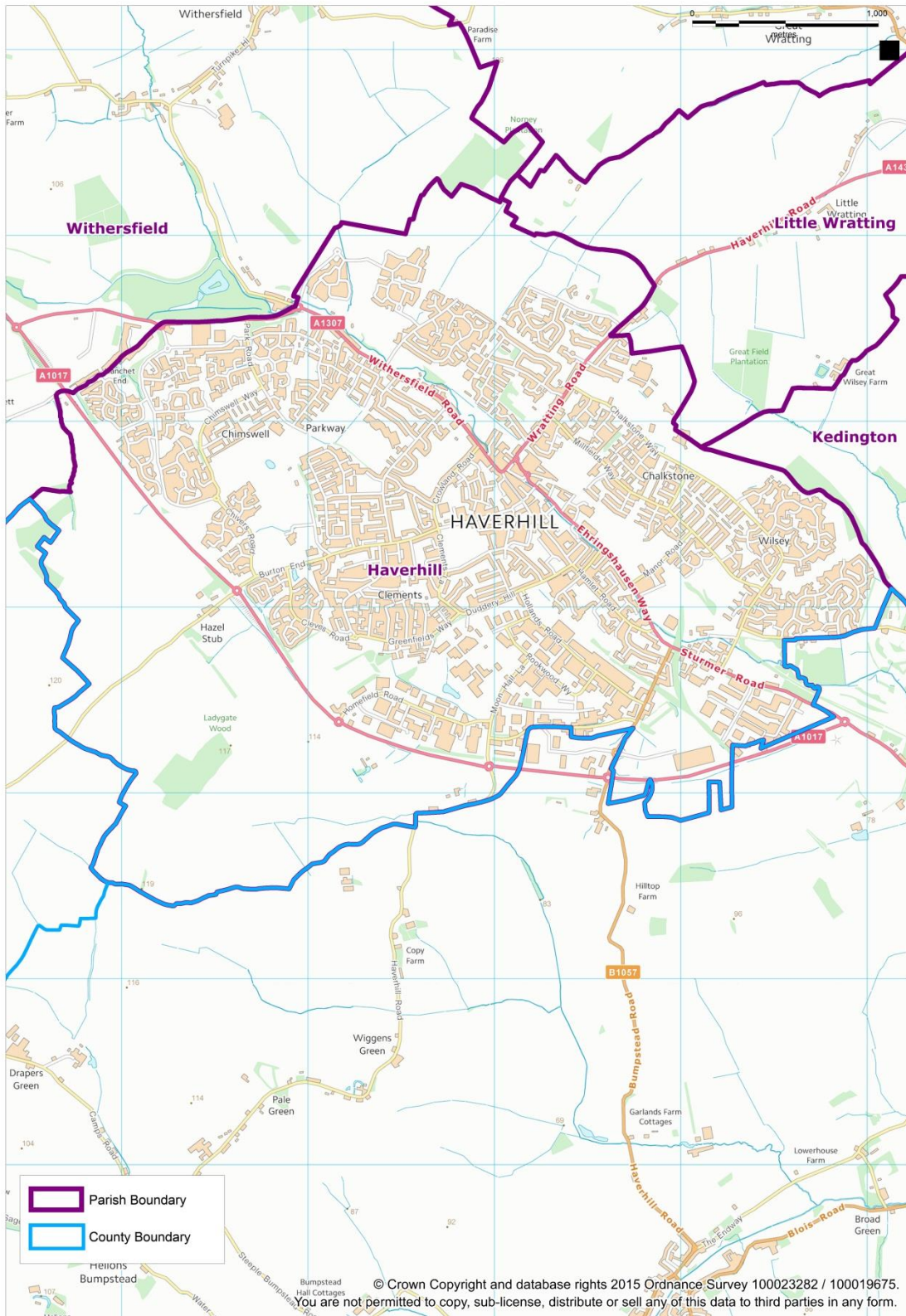


Issue Nos. 12-14 – Vision 2031 Strategic Sites “North-West Haverhill”, “North-East Haverhill” and “Hanchett End” (Haverhill Research Park)

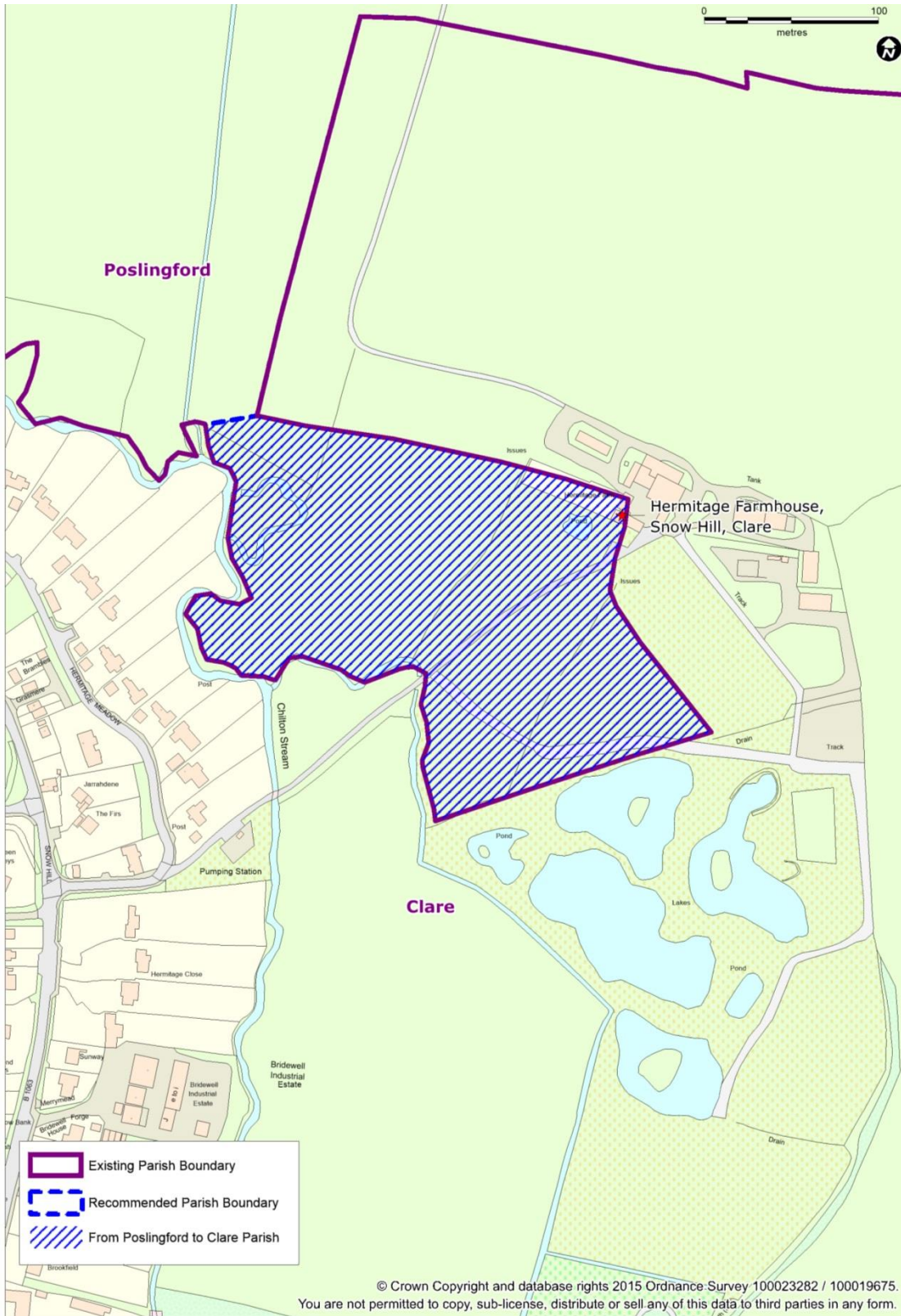




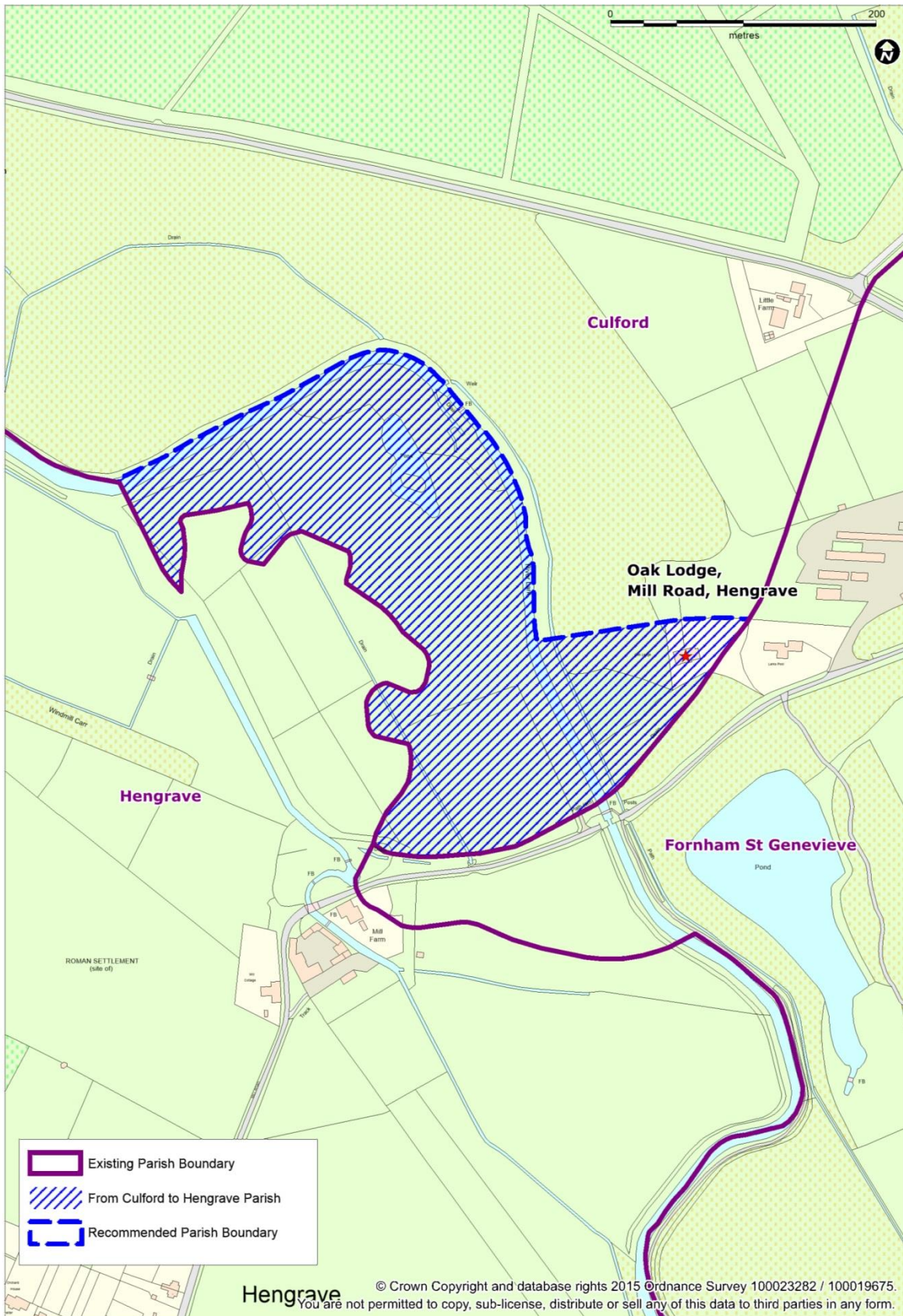
Issue No. 15 – County boundary between Suffolk and Essex adjacent to Haverhill



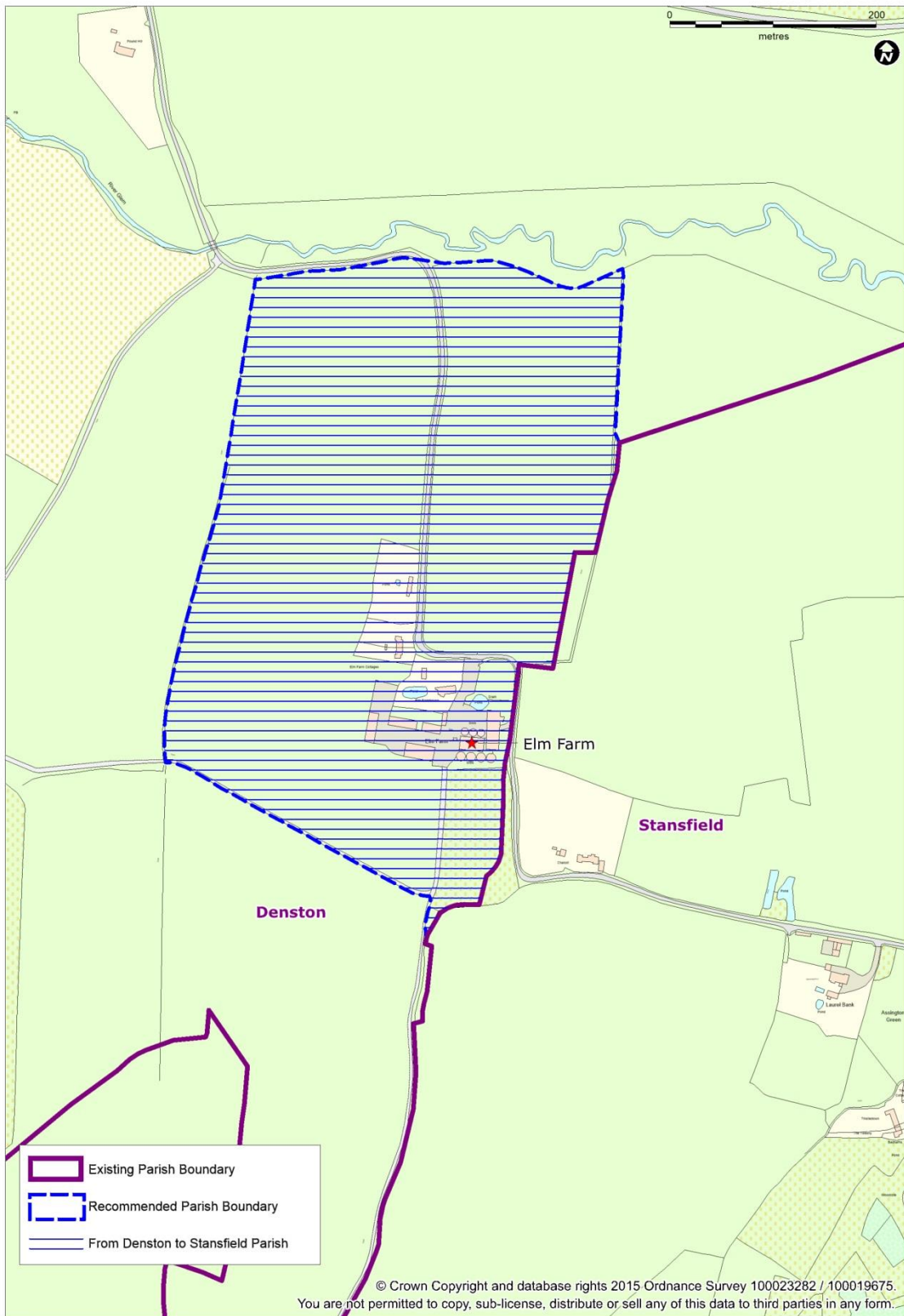
Issue No. 16 – Hermitage Farmhouse, Snow Hill, Clare



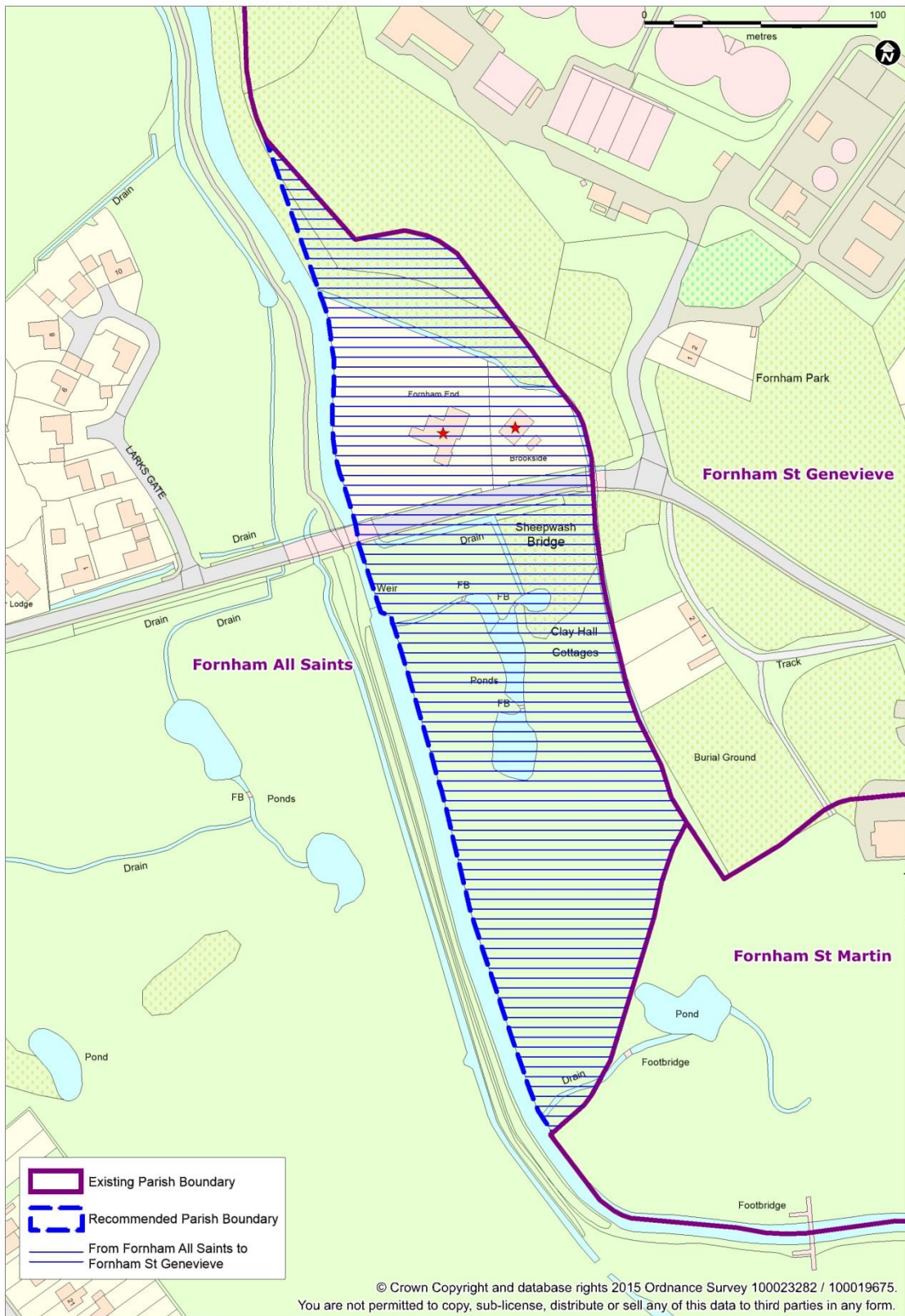
Issue No. 17 – Oak Lodge, Mill Road, Hengrave



Issue No. 19 – Elm Farm and associated cottages, Assington Green, Stansfield



**Issue No. 20 – Area between Fornham Lock Bridge and the Sheepwash Bridge, adjacent to the sewage works entrance, Fornham St Martin**



Issue No. 22 – Weathercock House, New Common Road, Market Weston

